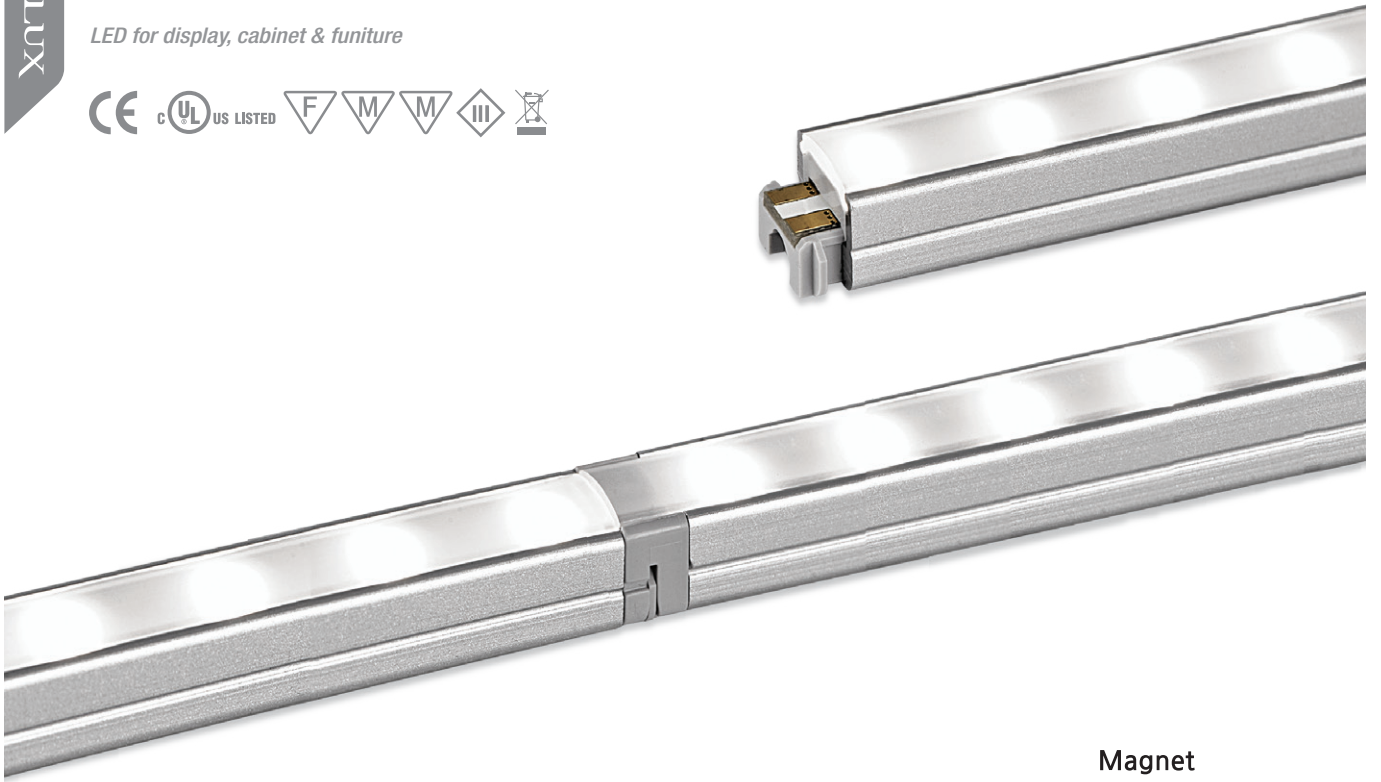
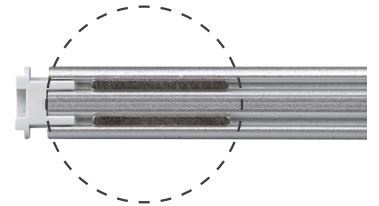


DIVA 2

LED for display, cabinet & furniture



Magnet

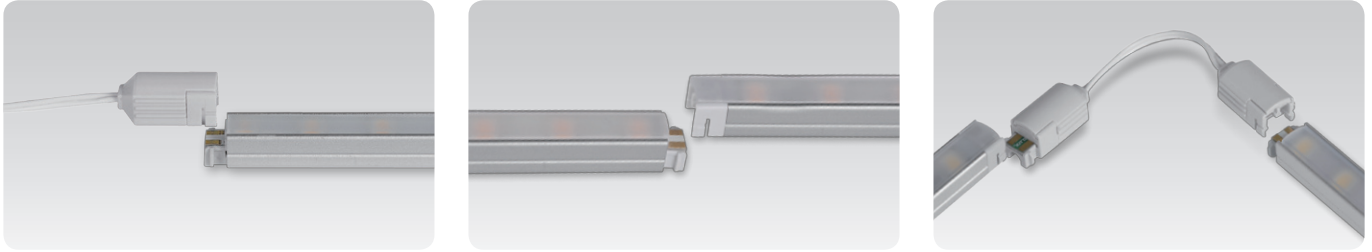


DIVA 2

Little light, Big punch!!
Perfect size for cabinet display and showcases.



Easy connection

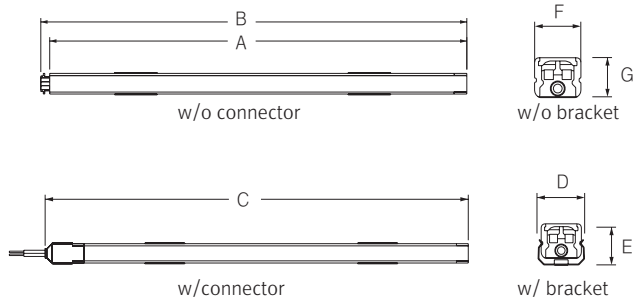


Various options

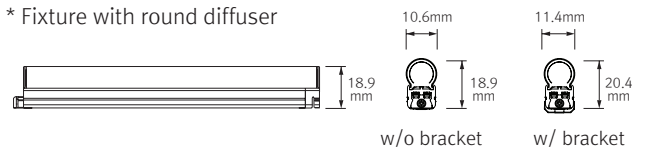


Dimension

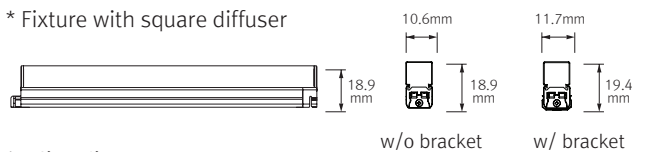
* Fixture



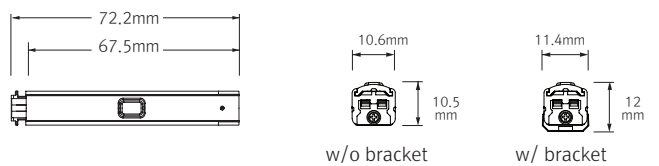
* Fixture with round diffuser



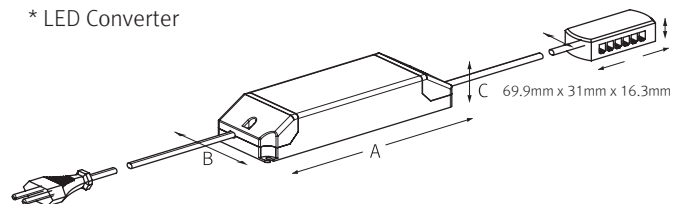
* Fixture with square diffuser



* Inline dimmer



* LED Converter



Model Name	Power Input (V)	Lamp Power (W)	A (mm)	B (mm)	C (mm)	D (mm)	E (mm)	F (mm)	G (mm)
NDV1A4B24M	DC 24	1.2	95	100	117	12	11	10.6	9
NDV3A4B24M	DC 24	2.4	188	192	210	12	11	10.6	9
NDV4A4B24M	DC 24	3.5	280	285	302	12	11	10.6	9
NDV7A4B24M	DC 24	7	560	565	582	12	11	10.6	9
NDV11A4B24M	DC 24	10.5	840	845	862	12	11	10.6	9
NDV15A4B24M	DC 24	14	1118	1123	1140	12	11	10.6	9

Modle name	A (mm)	B (mm)	C (mm)
FLC15-24V/T	121	45	16
FLC30-24V/T	150	41	31
FLC75-24V/T	180	60	32

DIVA 2

LED for cabinet



DIVA2 1W length (100 mm)



DIVA2 3W length (193 mm)



DIVA2 4W length (285 mm)



DIVA2 7W length (565 mm)



DIVA2 11W length (845 mm)



DIVA2 15W length (1123mm)



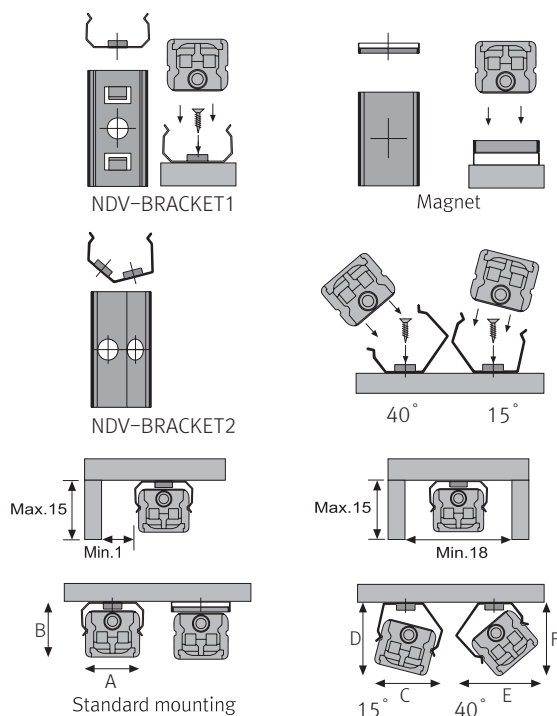
Product Features

- Dark spot free at the linking point
- Eco friendly product
- Super slim size
- Various mounting method

Specification

- Voltage : DC 24V
- Operating temperature : 0~45°C
- Lamp life : 40,000hr/70%
- Available color : 2400K, 2700K, 3000K, 3500K, 4000K, 6000K
- Color rendering : $R_a > 80$
- Energy efficiency : 75lm/W
- Degree of protection IP20

Installation



	A(mm)	B(mm)	C(mm)	D(mm)	E(mm)	F(mm)
Flat type	11.9	11.2	13.5	13.5	14.5	13
Round type	11.9	19.8	15.7	15.7	18.8	20.3
Square type	11.9	19.6	15.5	15.8	18.8	20.3

Max. connection

- DIVA2 : 55Watt in one row (single power feed)
- LED Driver

LED Driver Model Name	Max. units for LED Driver		
	24V/15W	24V/30W	24V/75W
NDV1A4B24M	12	25	62
NDV3A4B24M	5	10	25
NDV4A4B24M	4	7	18
NDV7A4B24M	2	4	10
NDV11A4B24M	1	2	6
NDV15A4B24M	1	2	5

Accessories

① Connecting cables (Between DIVA2 & DIVA2)

NDVPTC	NDVPTC1	NDVPTC2	NDVPTC4	NDVPTC6
150mm(6inch)	300mm(1feet)	600mm(2feet)	1200mm(4feet)	1800mm(6feet)

② Power feed : NDVPC

Power feed (Between DIVA2 & 6-way distributor)

③ Mounting bracket : NDV-BRACKET 1

④ Angle Bracket (15° & 40°) : NDV-BRACKET 2

⑤ Sidefeed for Seamless Extension (3W) : NDV3A4B24M/S

The dimension is the same as NDV3A4B24M

⑥ End Cap : NDV-CAP

⑦ LED Driver with 6way distributor, With power cord(1800mm)

Part No	FLC15-24V/T	FLC30-24V/T	FLC75-24V/T
Capacity	15W 24V	30W 24V	75W 24V

⑧ Dimming Interface (1-10V) : FLD-V10

⑨ Inline dimmer : NDVDIM (Max 55W in a row)

⑩ Round Diffuser

NDV1CVRM	NDV3CVRM	NDV4CVRM	NDV7CVRM	NDV11CVRM	NDV15CVRM
1W	3W	4W	7W	11W	15W

⑪ Square Diffuser

NDV1CVSM	NDV3CVSM	NDV4CVSM	NDV7CVSM	NDV11CVSM	NDV15CVSM
1W	3W	4W	7W	11W	15W

⑫ Y connector(2 way distributor)

⑬ Connecting bracket : NDV-BRACKET3

