

**Driver LC 14W 250-350mA flexC R ADV2**

advanced round series

**Product description**

- \_ Fixed output built-in LED driver
- \_ Constant current LED driver
- \_ For luminaires of protection class I and protection class II
- \_ Adjustable output current 250 or 350 mA
- \_ Up to 90 % efficiency
- \_ For ambient temperatures up to 60 °C
- \_ Nominal lifetime up to 50,000 h (at ta 50 °C)
- \_ 5 years guarantee

**Housing properties**

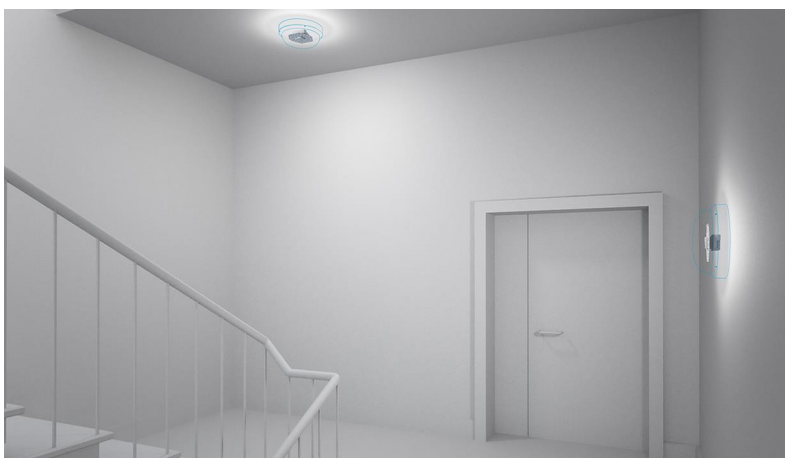
- \_ Casing: polycarbonate, white
- \_ Type of protection IP20

**Functions**

- \_ Overload protection
- \_ Short-circuit protection
- \_ No-load protection

**Typical applications**

- \_ For spot light, track light and wall light in retail and hospitality application

**Website**
<http://www.tridonic.com/28003210>


Spotlights



Downlights



Linear



Area



Floor | Wall



Free-standing



Street



Decorative

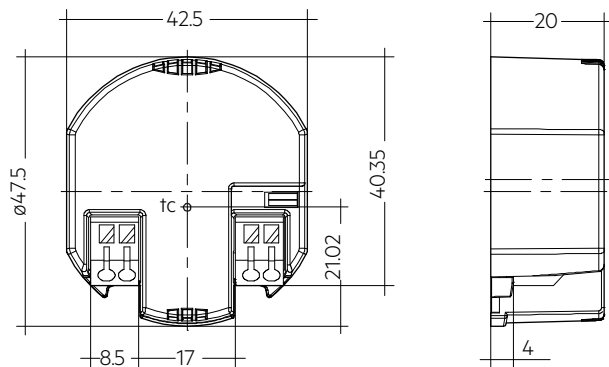


High bay

**Driver LC 14W 250-350mA flexC R ADV2**

advanced round series

**The complete data sheet for this product is available in the Downloads section.**



## Ordering data

Type	Article number	Packaging, carton	Packaging, pallet	Weight per pc.
LC 14/250-350/40 flexC R ADV2	28003210	200 pc(s).	7,200 pc(s).	0.044 kg

## Technical data

Rated supply voltage	220 – 240 V
AC voltage range	198 – 264 V
Mains frequency	50 / 60 Hz
Max. output power	14 W
Typ. efficiency (at 230 V, 50 Hz, full load) <sup>①</sup>	90 %
$\lambda$ (at 230 V, 50 Hz, full load) <sup>①</sup>	0.95
Output current tolerance <sup>②</sup>	$\pm 7.5 \%$
Max. output peak current	361 mA
Max. output voltage (U-OUT)	50 V
THD (at 230 V, 50 Hz, full load) <sup>①</sup>	< 25 %
Typ. current ripple (at 230 V, 50 Hz, full load)	$\leq 5 \%$
Output P_ST_LM (at full load)	$\leq 1$
Output SVM (at full load)	$\leq 0.4$
Starting time (at 230 V, 50 Hz, full load)	$\leq 0.5$ s
Turn off time (at 230 V, 50 Hz, full load)	$\leq 0.5$ s
Hold on time at power failure (output)	0 s
Ambient temperature t <sub>a</sub> (at lifetime 50,000 h)	50 °C
Storage temperature t <sub>s</sub>	-20 ... +60 °C
Mains burst capability	1 kV
Mains surge capability (between L - N)	1 kV
Mains surge capability (between L/N - PE)	2 kV
Lifetime	up to 50,000 h
Guarantee	5 Year(s)
Dimensions L x W x H	47 x 42 x 20 mm

### Approval marks



## Standards

EN 55015, EN 61000-3-2, EN 61000-3-3, EN 61347-1, EN 61347-2-13, EN 61547, EN 62384

## Specific technical data

Type	Output current <sup>②</sup>	Min. output voltage	Max. output voltage	Max. output power	Typ. power consumption (at 230 V, 50 Hz, full load)	Typ. current consumption (at 230 V, 50 Hz, full load)	tc point max.	Ambient temperature ta	Iout select
LC 14/250-350/40 flexC R ADV2	250 mA	24 V	40 V	10 W	12 W	60 mA	85 °C	-20 ... +60 °C	open
LC 14/250-350/40 flexC R ADV2	350 mA	24 V	40 V	14 W	16 W	80 mA	85 °C	-20 ... +60 °C	short

① Test result at 350 mA.

② Output current is mean value.