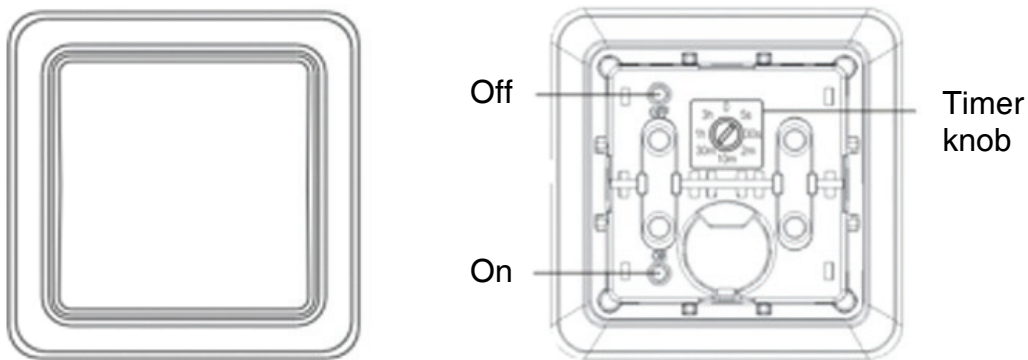


## Manual

WST-916 1-way wall transmitter with timer.

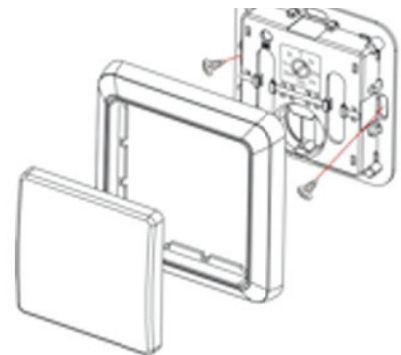
A wireless 1-way wall transmitter which can easily be mounted on a wall using the supplied screws or double-sided tape.

Works with both On/Off receiver and dimmer and can also be set to automatically switch off after a set time period. (5 sec, 30 sec, 2 min, 10 min, 30 min, 60 min or 180 minutes).



## Installation

1. Mount the receiver on the wall using screws or tape.
2. Fit the frame.
3. Fit the button.



## Programming

1. Press the Learn button on the receiver, the LED light on the receiver will flash and show that it is in learning mode.
2. Press the On button, the connected light will flash twice as confirmation.

The learning mode lasts for 12 seconds if no transmitter is activated. If you wish to exit the learning mode manually, press the Learn button once more.

If you do not receive confirmation from the receiver during learning, the memory may be full. Follow the steps below to delete receiver.



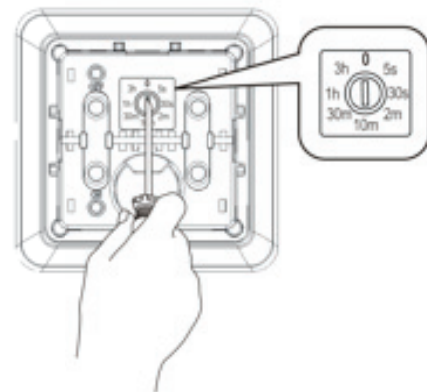
### Delete

1. Press the Learn button on the receiver you want to disconnect.
2. Press the Off button on the transmitter.

# Use

## Manual On/Off

Use a small screwdriver to turn the timer knob to 0.



## Automatic switch-off

Use a small screwdriver to set the timer knob to the desired time.

The options are: 5 sec, 30 sec, 2 min, 10 min, 30 min, 60 min or 180 min.

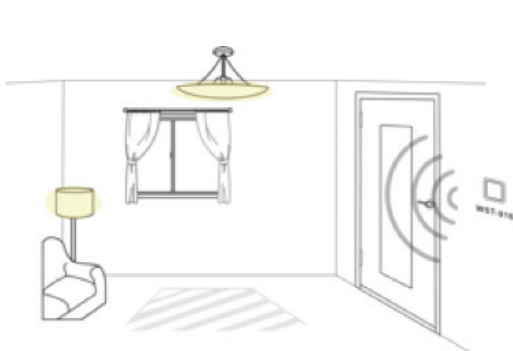
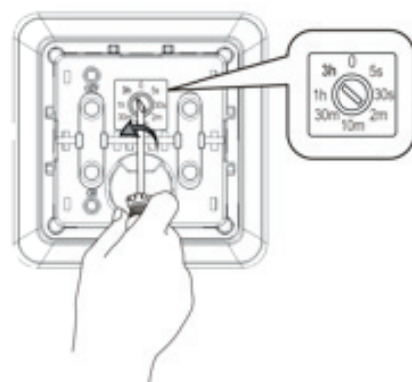


## Example:

WST-916 is set to 180 minutes.

1. Switch on the light.
2. The timer counts down 180 minutes.
3. An Off-signal is automatically sent to the receiver and the light switches off.

The light is switched on and after 3 hours the light is switched off



## Note

If, while timer countdown is in progress on an On/Off receiver:

- The ON button on the power switch is pressed, the timer will restart and begin the countdown again.
- The OFF button on the power switch is pressed, the light will be switched off immediately and the timer will stop.

If, while timer countdown is in progress on a dimmer receiver:

- The ON button on the power switch is pressed, the light will start to dim and a further press on the ON button will confirm the desired dimmer value. The countdown will restart.
- The OFF button on the power switch is pressed, the light will be switched off immediately and the timer will stop.

### On/Off function

Pressing the ON button switches on the light.

Pressing the OFF button switches off the light.

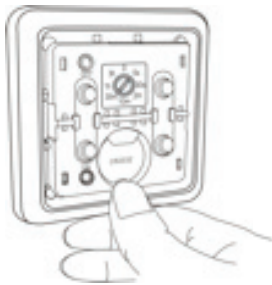
### Dimmer

Pressing the ON button once switches the light on.

Pressing it again makes the light start to dim

When it is pressed again the light stops at the relevant dimmer value.

## Battery replacement



1. Press the battery holder.



2. Take out the battery.



3. Replace the battery with the + side upwards towards you.

## Specification

Frequency: 433.92MHz

Battery: 1 x Lithium 3V CR2032